

---

CARE USA  
2021 ANNUAL  
REPORT



## letter from the president and CEO



THE LAST YEAR HAS TESTED AND PROVEN  
THE STRENGTH, STAMINA, AND ENDURANCE  
OF CARE STAFF, PARTNERS, AND THE PEOPLE  
WE SERVE...

The last year has tested and proven the strength, stamina, and endurance of CARE staff, partners, and the people we serve, as a global pandemic stretched into its second full year, worsening crises and ongoing injustices.

Our commitment continued through the CARE Crisis Response Campaign, the largest in our history. With your support, we were able to raise our goal from \$100 million to \$150 million in new funding to save lives and protect the futures of more than 100 million people.

2021 also marked the culmination of our 75th year as an organization, as President Joe Biden and former Presidents Barack Obama, George W. Bush, Bill Clinton, and Jimmy Carter joined our virtual anniversary celebration in May.

Shortly after that event, India's COVID outbreak demanded immediate mobilization. Your support enabled us to reach more than 10 million people in India directly with treatment, vaccines, and preventative care, and to facilitate another 50.9 million vaccine doses via partners.

This year also marked the start of our two-year Fast and Fair initiative, which aimed to provide vaccine delivery to at least 100 million vulnerable people. We were able to exceed our goal in just one year, prioritizing frontline caregivers in 69 countries, and will continue to support equitable vaccine delivery through 2022.

We are responding to COVID's downstream impacts: the enormous regressions around poverty and hunger. CARE has provided clean water to 4.9 million people, hygiene kits to 4.8 million people, and nutritious food for 4.3 million people who face the threat of

malnutrition due to lockdowns or loss of income. With 24 million children projected to drop out of school permanently, CARE has also expanded an innovative accelerated learning program for out-of-school adolescents to gain relevant skills.

Throughout the year, CARE has responded to the crises that were most urgent. Sudden instability in Afghanistan and a 7.2-magnitude earthquake in Haiti created difficult challenges, but you enabled us to respond meaningfully. In both countries, we were able to draw upon long histories of community trust, engagement, and impact.

That history is what informs and fuels our 2030 Vision, which calls for CARE and our partners to impact 200 million people living in poverty. The world is facing daunting challenges and strong headwinds, including climate change, conflict, and COVID. In response, we are leaning into more innovation, private sector partners, and bold advocacy to increase our reach.

Building on our strengths in gender-equal approaches, local leadership, and global scale, we also aspire to deliver COVID vaccines and additional humanitarian and development support to hundreds of millions more people. Thank you for being part of our impact journey as we join with you to seek a more equitable future for all.

**On behalf of everyone at CARE, I thank you for your trust, partnership, and ongoing commitment.**

*Michelle Nunn*



Michelle Nunn  
President and CEO

# featured program

## Village Savings and Loan Associations

In 1991 no one yet knew that a grassroots experiment in Niger, building on the ancient practice of group savings, would go on to change large parts of the world. Pioneered in West Africa, VSLAs are distinct from institutional microfinance because they evolve based on member needs and aspirations.

Over the past 30 years, VSLAs have grown from a means of savings to a building block of communities. Groups enable members to achieve goals that may have nothing directly to do with economic outcomes. That's why women stay with these groups for a lifetime — often over the course of generations. VSLAs are not just a financial service; they're a platform for change.

- Children stay in school longer and get more nutritious food.
- Adolescent girls delay marriage and gain confidence and financial literacy skills.
- Adult women and mothers gain household influence as earners, investing in their children's education and their own enterprises.

- Older women, often widowed, have a network they can turn to for support while building a safety net for unexpected expenses or healthcare.

VSLAs have reached 10 million people in 59 countries and are a powerful, endlessly reproduceable engine of community development and gender equality. Members and partner organizations have taken CARE's approach and replicated it, reaching millions more people. This model has "gone viral" because it not only opens access to money, but also supports critical needs, positively affecting livelihoods, health, education, and empowerment.

Savings groups have also provided resilience during COVID-19. New data reveals that VSLA members are half as likely to report challenges earning an income or providing food or healthcare compared with women who were not part of these groups. The strength provided by a VSLA benefits more than just members, as many groups mobilized to support entire communities when COVID hit.

CARE is working with other organizations, government partners, and group members to scale the reach of VSLAs to 62 million people by 2030.

## WHAT IS A VSLA?

Self-managed group of about 15-25 individuals

Primarily poor women in rural areas

Save money, access small loans, obtain emergency insurance

# 2021 CARE by the numbers

# CARE REACHED

1,495 PROJECTS > 102 COUNTRIES > 100M PEOPLE

3M

people to support climate justice and address the effects of climate change.

3M

people to support women's economic justice.

14M

people to advance gender equality.

24M

people in humanitarian crisis to help meet their basic needs.

34M

people to provide access to food, water, and nutrition.

48M

people to provide access to health services, including the right to sexual and reproductive health.

26%

of projects created a new solution to a problem.

85%

of projects integrated gender into their work.

36%

of projects included moderate or intensive advocacy.

 **FOOD & WATER**

**Fighting malnutrition one village at a time**

Souadé Aboubacar, a mother of nine, lives in rural Niger and participates in Hamzari, a five-year, \$33 million CARE program (in partnership with USAID) that addresses food insecurity and malnutrition.

Souadé is part of a “care group” with 10 women, sharing new ideas about child nutrition and health.

**“Before Hamzari we did not know about enriched porridge and bean puree,” she says. “We noticed that by eating this porridge and bean puree our children are in good health and grow normally, without diarrhea or signs of malnutrition.”**

“Today, we practice market gardening, a new activity in our village. We produce vegetables for salad that we can prepare and eat with our children. Thanks to Hamzari, we also produce cabbages, tomatoes, and other foods.”

 **CRISIS RESPONSE**

**Rebuilding in Haiti**

Natacha is one of thousands of Haitians who lost their homes and their businesses in the 7.2-magnitude earthquake that struck Haiti on August 14.

Her small store was looted by people looking for food in the quake’s aftermath, and she’s not sure how to restart. The construction business her husband worked in was destroyed, too. “I need to restart my activities, my work,” she says. “I don’t like to sit around.”

Natacha and her husband are exactly the people who can help rebuild Haiti. She sells food, he works in a cement business — both local businesses that will be critically needed not just now, but in the weeks, months, and years to come.

As CARE focuses on those immediate needs, we’re keeping the big picture in mind. CARE has supported more than 119,000 people since the earthquake — mostly with water, hygiene supplies, and information — and will continue to help the people of Haiti, like Natacha, build back stronger.



**WITHOUT WOMEN,  
THERE WILL BE  
NO SOLUTIONS.**

 **CLIMATE**

**Advocacy and Adaptation**

Raquel Vásquez leads the grassroots women’s organization *Madre Tierra* in Guatemala.

Over the past 24 years, the organization has been a place for Raquel to interact with local groups and local and national authorities and to advocate for women’s empowerment.

CARE’s Partners for Resilience program helps farming communities like Raquel’s adapt to climate change and drought. Training in irrigation methods and the use of more drought-resistant seeds has changed the course of her group. Its members also have become more outspoken about their role in preserving their environment. **For Raquel, one thing is clear: Without women, there will be no solutions.**

GUATEMALA

# stories of impact



MALAWI



## EDUCATION & WORK

### Empowering education and agriculture through VSLAs

Litness Nyirongo, 16, is the oldest child from a rural family in Malawi. Before her parents joined a Village Savings and Loan Association (VSLA), life was a struggle. Her family couldn't afford to send her or her siblings to school and were living under a grass roof.

Since joining the VSLA, Litness' parents have been able to save money, so they can send their children to school. They have built a house with a metal roof and improved their crop and livestock production. Litness proudly adds: "School fees are no longer a challenge, and we have a great harvest yield by the end of the year."

Through the VSLA, Litness' parents also attend household counseling sessions, to improve relations between men and women, foster equal decision-making, and increase women's financial independence.

**"School fees are no longer a challenge, and we have a great harvest yield by the end of the year."**



## HEALTH

### A rapid response to COVID-19 in India

What does it look like to respond to the world's worst COVID outbreak?

It looks like 2,000 beds in 14 treatment facilities across the country to support existing cases and prepare for future surges.

CARE has been on the front lines of the COVID response in India, aligning our work with governments to address the outbreak. Additional resources included supplies of desperately needed oxygen, medical equipment and personnel, and personal protective equipment.

The longer-term work includes greater vaccine access through new health centers and community outreach and education to stop the spread.



## EQUALITY

### Challenging traditional attitudes, improving communities

Agnes and Isingoma are a married couple in western Uganda whose troubled relationship has had a radical transformation that has benefited them and their community.

Agnes is a nurse, but her husband never allowed her to take a job or earn her own paycheck — instead, she ran a small clinic from home.

Through a partnership with The PepsiCo Foundation called She Feeds the World, Agnes went through women's leadership training and eventually gained the confidence to run for local political office in January — and she won. Meanwhile, Isingoma had his thinking challenged by a community-based mentoring program, and today he is his wife's biggest supporter.

In too much of the world, the talents of women and girls are overlooked. We all benefit when they are free to use their gifts and abilities to the fullest.

# 2021 Global Reach

## Latin America and Caribbean

- 900,000 people
- 137 projects
- 13 countries

## West Africa

- 6M people
- 197 projects
- 14 countries

## East, Central, and Southern Africa

- 17.6M people
- 394 projects
- 16 countries

## Middle East, North Africa, and Europe

- 6.8M people
- 264 projects
- 33 countries

## Asia and the Pacific

- 68.1M people
- 480 projects
- 24 countries

## North America

- 678,000 people
- 22 projects
- 2 countries

IN FISCAL YEAR  
2021, CARE WORKED  
IN 102 COUNTRIES  
AROUND THE WORLD

### CARE International Country Presence for FY21:

1. Afghanistan
2. Albania<sup>†</sup>
3. Armenia<sup>†</sup>
4. Australia<sup>\*\*</sup>
5. Austria<sup>\*\*</sup>
6. Azerbaijan<sup>†</sup>
7. Bangladesh
8. Belgium<sup>^</sup>
9. Benin
10. Bosnia and Herzegovina
11. Brazil<sup>†</sup>
12. Burkina Faso
13. Burundi
14. Cambodia
15. Cameroon
16. Canada<sup>\*\*</sup>
17. Chad
18. Colombia
19. Costa Rica<sup>†</sup>
20. Côte d'Ivoire
21. Croatia<sup>†</sup>
22. Cuba
23. Czech Republic<sup>\*\*</sup>
24. Democratic Republic of the Congo
25. Denmark<sup>\*\*</sup>
26. Ecuador

27. Egypt<sup>\*\*</sup>
28. El Salvador<sup>†</sup>
29. Ethiopia
30. Fiji<sup>†</sup>
31. France<sup>\*\*</sup>
32. Georgia<sup>\*\*</sup>
33. Germany<sup>\*\*</sup>
34. Ghana
35. Greece<sup>†</sup>
36. Guatemala
37. Guinea
38. Haiti
39. Honduras
40. India<sup>\*\*</sup>
41. Indonesia<sup>\*\*</sup>
42. Iraq
43. Japan<sup>\*\*</sup>
44. Jordan
45. Kenya
46. Kiribati<sup>†</sup>
47. Kosovo
48. Laos
49. Lebanon
50. Liberia
51. Luxembourg<sup>\*\*</sup>
52. Libya<sup>†</sup>
53. Macedonia<sup>†</sup>

54. Madagascar
55. Malawi
56. Mali
57. Mexico<sup>†</sup>
58. Montenegro<sup>†</sup>
59. Morocco<sup>\*\*</sup>
60. Mozambique
61. Myanmar
62. Nepal
63. Netherlands<sup>\*\*</sup>
64. Nicaragua<sup>†</sup>
65. Niger
66. Nigeria
67. Norway<sup>\*\*</sup>
68. Pakistan
69. Palestine (West Bank and Gaza)
70. Papua New Guinea
71. Peru<sup>\*\*</sup>

72. Philippines
73. Romania<sup>†</sup>
74. Rwanda
75. Samoa<sup>†</sup>
76. Senegal<sup>†</sup>
77. Serbia
78. Sierra Leone
79. Solomon Islands<sup>†</sup>
80. Somalia
81. South Africa<sup>†</sup>
82. South Sudan
83. Sri Lanka<sup>\*\*</sup>
84. Sudan
85. Switzerland<sup>†</sup>
86. Syria<sup>†</sup>
87. Tanzania
88. Thailand<sup>\*\*</sup>
89. Timor-Leste
90. Togo

91. Tonga<sup>†</sup>
92. Turkey
93. Tuvalu<sup>†</sup>
94. Uganda
95. United Kingdom<sup>\*\*</sup>
96. United States of America<sup>\*\*</sup>
97. Vanuatu
98. Venezuela<sup>†</sup>
99. Vietnam
100. Yemen
101. Zambia
102. Zimbabwe

● CARE International Members, Affiliates, and Candidates.

● CARE presence via Country Offices, work with/through partners, or other types of offices.

\*\* CARE International Members, Affiliates, and Candidates.

† Limited CARE presence, mostly working with/through strategic partnerships.

^ The Secretariat has offices in Belgium, Switzerland, and the UK, and staff based in 14 countries.

∅ Other registered offices.

<sup>†</sup> CARE International Members, Candidates, and Affiliates may implement projects and initiatives in their own countries.

CARE International acknowledges the existence of divergent views to certain territories. CARE International aligns with United Nations-sourced maps for consistency purposes; this use does not imply a political statement on any given country or territory.

## Thanks to our partners

For the past two years, we all have faced the unparalleled challenge of a global pandemic that has spared no one — no country, no community, no family. It remains with us at a time when the world is facing more armed conflict than ever before and the indisputable effects of climate change can be seen in every region.

Yet, through great uncertainty, we have also seen brilliant rays of hope in the places where CARE works. At the culmination of CARE's 75th anniversary, your partnership helped us reach 100 people in 102 countries, power our largest-ever crisis response, and send millions of CARE Packages to those who need them most. Together, we must continue to champion the power of the human spirit to overcome.

**Learn more at [care.org](https://care.org).**



TOGETHER, WE  
MUST CONTINUE  
TO CHAMPION  
THE POWER OF  
THE HUMAN SPIRIT  
TO OVERCOME

MALAWI



## featured foundations

**The Bill & Melinda Gates Foundation** has been a core CARE partner since 2001, contributing vital resources to women's empowerment, advocacy, food security, health, family planning, water and sanitation, emergency response, and livelihood programming. New investments built on previous efforts in Uganda, where CARE is moving women's economic empowerment forward at a national scale by serving as a technical adviser and facilitator, helping to create an enabling environment and management capacity support to the government. In Ethiopia, the Women's Empowerment Gender Transformative Opportunities (WE GO) program is institutionalizing gender-transformative approaches within the Ministry of Agriculture and providing a blueprint for operationalizing their gender strategy through field-level implementation. The foundation supported CARE's humanitarian response following flooding in South Sudan, as well as the Women Respond project, facilitating learning around how women across six sub-Saharan countries were being affected by and responding to the COVID-19 pandemic and ensuring their informed response and recovery efforts. The foundation continued to support CARE's advocacy work, including the Learning Tours program, as well as ongoing efforts to reduce maternal and neonatal mortality in the Indian state of Bihar to strengthen the government health system.

**Center for Disaster Philanthropy (CDP)** supported CARE's humanitarian response following the Beirut port explosion in August 2020, fueling CARE's rapid provision of hot meals, food aid, emergency cash grants, and shelter assistance, as well as psychosocial support, trauma counseling, and other protections for vulnerable populations, including women and girls at risk of violence.

The partnership also engages local youth and migrant and domestic workers through workforce training to repair homes that have been damaged. CDP also contributed to CARE's response to the second wave of COVID-19 infections in India. The investment launched local deployments of trained medical and technical support staff in Bihar state, provided lifesaving medical equipment, and augmented continuing care with technology innovations.

**The David and Lucile Packard Foundation** and CARE launched a new integrated approach to building sustainable livelihoods and communities in Ethiopia. The project improves access to health services; provides tools for natural resource management and climate-sensitive livelihoods; addresses inequitable gender power dynamics; and strengthens multi-sectoral sexual and reproductive health systems, providing a holistic, interdependent package of programs designed for multiplied impact.

**Educate a Child**, a program of the Education Above All foundation, partnered with CARE for the second phase of *Waxbar Carurtaada* (Educate Your Children) in Somalia. The three-year initiative will operate in 17 districts in five regional states, ensuring that more than 50,000 out-of-school children affected by instability, displacement, social exclusion, and poverty have increased opportunities to enroll and complete a quality primary education. The project will strengthen local governance structures and community support around school safety and inclusive and gender-sensitive education, increasing enrollment rates among marginalized groups, including girls and the extremely poor.



## featured partners

### TIFFANY & CO.

#### TIFFANY & CO.

Between July 1 and August 31, 2020, Tiffany & Co. held a cause marketing campaign in which 100% of the profits from the Tiffany Infinity collection supported CARE's Crisis Response Campaign. The response from consumers was overwhelmingly positive — raising more than \$3.8 million to address financial resilience for the most vulnerable communities affected by COVID-19, particularly women and people of color.

CARE has already worked with more than 80,000 women and their families in 16 countries. We are on track to surpass our goal of supporting 150,000 people whose lives have been devastated by COVID-19.

CARE is responding in the U.S., where the pandemic has disproportionately impacted marginalized and low-income women. Tiffany & Co. is helping CARE reach a milestone of delivering 10 million CARE Package meals and millions in income for low-wage workers.

Around the world, CARE is unlocking the powerful potential of women and girls who have been hardest hit. We've met urgent needs by providing cash, food, COVID prevention trainings, and support for frontline workers. To help women build back stronger, we're delivering financial trainings, establishing savings groups, helping women open bank accounts, supporting micro entrepreneurs, and empowering women to increase their earnings.



DEMOCRATIC REPUBLIC OF THE CONGO

# TOGETHER, WE MAKE A DIFFERENCE



#### UPS

Whether it is a sudden emergency or an ongoing crisis, The UPS Foundation has been by CARE's side since 1995, aiding people in need around the world.

In the wake of COVID-19, UPS worked with CARE to not only respond to the surge in India but also to work toward long-term solutions to the pandemic through CARE's Fast and Fair initiative, which aims to provide equitable worldwide vaccine assistance for 100 million vulnerable people and 275,000 healthcare workers.

With a 2021 investment totaling \$1 million, UPS has used its partnerships, resources, and logistics expertise to ensure that CARE's humanitarian work reaches the most people, efficiently. With UPS's support, CARE has been better able to respond to emergencies around the globe, including this year in Haiti, India, and South Sudan, and through CARE's Humanitarian Surge Fund, which enables CARE to respond quickly when emergencies strike anywhere.

UPS's support has also allowed CARE to prepare for emergencies through a supply chain management program that revolutionized the way CARE tracks and delivers critical supplies for COVID-19 and other emergencies. These warehouse management tracking systems have been implemented in six countries in West Africa and continue to scale, delivering lifesaving aid to millions.



#### Coca-Cola

CARE, The Coca-Cola Company, and its philanthropic arm, The Coca-Cola Foundation, have partnered for more than 30 years, with funding for emergency response; water, sanitation, and hygiene (WASH); and women's economic empowerment programming. Generous support from The Coca-Cola Foundation enabled CARE to launch and deliver CARE Packages in the United States for the first time in our history. The grant supported distribution to vulnerable populations impacted by the COVID-19 pandemic in six U.S. cities and helped CARE exceed its goal of distributing 1 million relief packages by the 75th anniversary of the CARE Package in May 2021.

The Coca-Cola Foundation was an early supporter of CARE's Fast and Fair COVID-19 vaccination campaign to facilitate equitable vaccine distribution, combat misinformation and vaccine hesitancy, and protect frontline health workers. Through this partnership, we are closing the gaps that slow vaccine delivery, including in some of the most difficult environments in the world, and successfully drawing attention to last-mile delivery and gender-related barriers.

# donors and partners

## Global Leadership Society

**Cumulative Lifetime Giving:**  
\$1,000,000+

Abbott  
David T. and Jean K. Akers  
Alliance for a Green Revolution in Africa  
Amway  
Nancy K. Anderson  
The Annenberg Foundation  
Anonymous (37)  
Armacost Charitable Remainder Unitrust  
The David R. & Patricia D. Atkinson Foundation  
The Atlantic Philanthropies  
Estate of Barbara L. Bacich  
James and Marietta Bala  
Mr. E. T. Baldrige  
Margaret D. and Matthew T. Balitsaris  
Paul and Mary Jan Bancroft  
Bank of America  
Baxter International Foundation  
Ben and Luanne Russell  
Benevity  
The Bezos Family Foundation on behalf of Students Rebuild  
Ken Birman and Anne Neiryneck  
Blackstone  
The Arthur M. Blank Family Foundation  
Bloomberg Philanthropies  
Estate of William E. Boeing III  
The Dietrich W. Botstiber Foundation  
Estate of Daniel L. Brenner  
Finn Brooks Family Foundation  
The Howard G. Buffett Foundation  
Helen and Harold Buirkle  
Priscilla Bullitt Charitable Trust

C.E. and S. Foundation Inc.  
Cargill  
Eduardo Castro-Wright and Fabiola De Castro  
Catholic Relief Services  
The Chubb Corporation  
Cisco Systems Inc. and the Cisco Foundation  
The Coca-Cola Company  
Estate of Priscilla B. Collins  
The Community Foundation for Greater Atlanta  
Community Foundation for Southern Arizona  
Community Foundation of Greater Memphis  
Covance Inc.  
Credit Suisse  
Credit Suisse Americas Foundation  
Susan M. Crown  
Estate of J. W. Culler  
Michael and Susan Dell Foundation  
Delphi Asset Management  
Delta Air Lines  
Estate of Elaine Dooman  
Dubai Cares  
Educate a Child  
Estate of Mark Eisner Jr.  
Joseph H. and Barbara I. Ellis  
ELMA Philanthropies  
Nancy L. Evans Admin Trust  
Everett/O'Connor Charitable Trust  
Estate of Lucia P. Ewing  
Facebook  
Estate of Saralee Fine  
Estate of Janet A. Fisher  
The Flatley Foundation  
The Ford Foundation



The Frees Foundation  
Estate of Esther Freier  
Lloyd A. Fry Foundation  
Gap Foundation  
Bill & Melinda Gates Foundation  
GE Foundation  
General Mills Foundation  
Global Environment Technology Foundation  
Global Impact  
Goldman Sachs  
Estate of John M. Harding  
Estate of Juliet F. Harding  
Wayne R. and Camellia A. Helsel  
The William and Flora Hewlett Foundation  
Conrad N. Hilton Foundation  
Justin S. and Hilarie V. Huscher  
Glenn H. and Deborah Dow Hutchins  
Jahn's Private Charitable Foundation  
Johnson & Johnson  
Sheila C. Johnson  
The Jordan Family  
Steve Joyce  
JPMorgan Chase Foundation  
A. Morris Williams Jr.  
Michael G. and Nancy O. Kaehr  
Peter H. and Joan M. Kaskell  
Dean C. and Elizabeth H. Kehler  
Rosalind and Michael Keiser  
W.K. Kellogg Foundation  
The Kendeda Fund  
Estate of Mary B. Ketcham  
Julie Konigsberg  
The Kresge Foundation  
Latter-day Saint Charities  
The LeBrun Foundation  
Levi Strauss Foundation  
Elizabeth M. Lutas  
The John D. and Catherine T. MacArthur Foundation  
Mars Inc.  
John Martello  
Mastercard  
The MathWorks Inc.  
The Anita M. McCullough Living Trust  
The Andrew W. Mellon Foundation  
Merck & Co. Inc.  
H. Conrad III and Sarah S. Meyer

Microsoft Corporation  
Millennium Water Alliance  
Mondelēz International Foundation  
Gordon and Betty Moore Foundation  
William S. and Jane R. Mosakowski  
Charles Stewart Mott Foundation  
Multiple District 19 Lions  
Estate of Julia Van Munster  
Estate of Mary E. Murdock  
The New York Community Trust  
NIKE Foundation  
Oak Foundation  
Daniel Oliver Revocable Trust  
Open Society Foundations  
Oracle  
Orange County Community Foundation  
The Osprey Foundation  
Estate of Leonard R. Overton  
The David and Lucile Packard Foundation  
The Panaphil Foundation  
The Peierls Foundation  
Jim Pentecost  
The PepsiCo Foundation  
Pew Charitable Trusts  
Pfizer Inc.  
The Pfizer Foundation  
The Picower Foundation  
Power and Telephone Supply Company  
Procter & Gamble Company  
Genie and Scott Randell  
Reach Out to Asia  
The Rockefeller Foundation  
Estate of Hazel Gibbons Ross  
Adelia Russell Charitable Foundation  
John and Virginia Sall  
Sall Family Foundation  
Sheryl Sandberg and Tom Bernthal  
Saperlipopette  
Estate of Kendrick Schlatter  
Estate of Ronald and Elisabeth Schodt  
Schultz Family Foundation  
The Charles Schwab Corporate Foundation  
Silicon Valley Community Foundation  
Harold Simmons Foundation  
Brian J. Smith and Laurel Spellman  
David A. Smith and Nancy H. Smith

Sony Music Entertainment  
Theodore R. and Vada S. Stanley  
Starbucks Coffee Company  
The Starr Foundation  
Start Small Foundation  
The Sunbridge Foundation  
Estate of Leonard Surratt  
Estate of Samuel H. Talley  
Target  
Daniel M. Tellep  
The David Tepper Charitable Foundation Inc.  
The Tides Foundation  
Tiffany & Co.  
TOSA Foundation  
Trehan Foundation  
William D. Unger  
United Nations Foundation  
The UPS Foundation  
Visa Inc.  
Deidra J. Wager  
The Walmart Foundation  
Weyerhaeuser Company Foundation  
Michael and Geraldine Wiles  
Thomas L. Williams Trust  
The Willow Springs Foundation  
Wisconsin Evangelical Lutheran Synod  
The Robert W. Woodruff Foundation

## Global Leadership Society

**FY21: \$1,000,000+**

Abbott  
Anonymous (2)  
Paul and Mary Jan Bancroft  
Blackstone  
Cargill  
Educate a Child  
Nancy L. Evans Admin Trust  
The Flatley Foundation  
Bill & Melinda Gates Foundation  
General Mills Foundation  
Hutchins Family Foundation Inc.  
Steve Joyce  
Julie Konigsberg  
Latter-day Saint Charities  
Mars Inc.  
The MathWorks Inc.  
Mondelēz International Foundation

The David and Lucile Packard Foundation  
Procter & Gamble Company  
Martin Reinheimer Trust  
Sall Family Foundation  
Start Small Foundation  
Tiffany & Co.  
The UPS Foundation  
Thomas L. Williams Trust

## Founder's Council Violeta Chunchu Society

**FY21: \$500,000-\$999,999**

Mr. and Mrs. Allen  
Anonymous (2)  
The David R. & Patricia D. Atkinson Foundation  
Bank of America  
Benevity  
The Bezos Family Foundation on behalf of Students Rebuild  
The Arthur M. Blank Family Foundation  
Finn Brooks Family Foundation  
Carlin Family  
Center for Disaster Philanthropy  
The Coca-Cola Company  
Estate of Richard A. Cramer  
Facebook  
The Jordan Family  
William S. and Jane R. Mosakowski  
Estate of Leonard R. Overton  
The Rockefeller Foundation  
Estate of Curt Strand  
TOSA Foundation

## Founder's Council Lydia Marshall Society

**FY21: \$250,000-\$499,999**

Amway  
Airbnb  
Anonymous (2)  
Astellas Global Health Foundation  
The Dr. Martin Balser Impact Fund  
Eduardo Castro-Wright and Fabiola De Castro  
Cisco Systems Inc. and the Cisco Foundation  
Colgate-Palmolive  
Alison A. Cornell  
The Eleanor Crook Foundation

Douglas Dunn and Donna Gaab  
 Estate of Frederick E. Fichter  
 Jay Hallik and Vanessa Hallik  
 Justin S. and Hilarie V. Huscher  
 Thomas M. Leahey  
 Levi Strauss Foundation  
 Estate and Revocable Trust of Meilin Lin  
 Elsie R. Mannweiler Revocable Trust  
 Mastercard  
 Estate of Judith F. McGee  
 Microsoft Corporation  
 New Venture Fund  
 Novelis Inc.  
 The Osprey Foundation  
 Chang K. Park  
 The Peierls Foundation  
 PricewaterhouseCoopers  
 Public Consulting Group  
 PVH Corporation  
 Estate of Jean Robinson  
 David A. Smith and Nancy H. Smith  
 Patricia Smith and Paul Werner  
 United Nations Foundation  
 The Duncan and Mercedes Williams  
 2006 Family Trust

**Founder's Council Murray Lincoln Society**

**FY21: \$100,000-\$249,999**

David T. and Jean K. Akers  
 Nancy K. Anderson Trust  
 Anonymous (9)  
 AptarGroup Inc.  
 James and Marietta Bala  
 Dr. Cori Bargmann  
 Richard E. Berry Trust  
 Peter and Sarah Beshar  
 Ms. Katherine Bishop  
 Thomas C. Bishop  
 Bok Family Foundation  
 Helen and Harold Buirkle  
 Estate of Emily B. Campbell  
 Scott Gordon Campbell Living Trust  
 Leonard Cargan Irrevocable Trust  
 Ted and Catherine Carlson  
 Carnegie Corporation of New York  
 John S. and Sherry H. Chen  
 Estate of Donald Christianson  
 Estate of Billy Morris Davis  
 Stephen Esser and Dana Dortone

Sibyl Frankenburg and Steven Kessel  
 The Frees Foundation  
 Virginia Fulton  
 Gap Inc. and the Gap Foundation  
 Global Environment Technology Foundation  
 Charles C. Grimes Revocable Living Trust  
 Eliyahou and Britt Harari  
 Susan Hassan  
 Scott Hawks  
 Gerda W. Hoover Trust  
 Eugene P. Jacoby  
 Johnson & Johnson  
 Dave Jones  
 Rosalind and Michael Keiser  
 Charlotte Keuscher-Barkman Living Trust  
 Peter H. Lunt and Pilar Vasquez-Lunt  
 Tessa Lyons and Sam Steyer  
 Ken Birman and Anne Neiryneck  
 Susan O'Connor  
 Robert D. O'Toole  
 Olivela Inc.  
 Palo Alto Networks  
 The PepsiCo Foundation  
 Kathryn and Mark Petralia  
 Genie and Scott Randall  
 Horacio Rozanski  
 Estate of S.O. Rystad  
 SAP Concur  
 David J. Shevrin  
 Jon and Kim Shirley  
 Shockwave Foundation  
 Silicon Valley Community Foundation  
 Harold Simmons Foundation  
 The Skoll Foundation  
 Timothy J. and Lisa Sloan  
 Brian J. Smith and Laurel Spellman  
 Jonathan Soros  
 Starbucks Coffee Company  
 Estate of Alan Talbert  
 Tambourine  
 Samuel E. & Mary W. Thatcher Foundation Inc.  
 Tijori Foundation  
 Trehan Foundation  
 Sheldon Wolfe Revocable Trust

**Founder's Council Lincoln Clark Society**

**FY21: \$25,000-\$99,999**

AB InBev  
 Joseph and Sophia Abeles Foundation Inc.  
 Harry & Jane Alburger Charitable Trust  
 The Alcon Foundation  
 Allbirds  
 Alpha and Omega Semiconductors  
 American Express  
 Anonymous (18)  
 Joyce R. Anson Management Trust  
 The Appletree Fund  
 Lionel Arnold Trust  
 AT&T  
 Eleanor B. Badalich Trust  
 James N. Bailey  
 Patricia Barmeyer  
 Dennis M. Barry  
 David Bentley  
 Daniel Berger  
 Estate of Susanna W. Berger  
 Lawrence Blaskopf  
 Madeline and Alan Blinder  
 Gladys E. Bonilla Life Insurance  
 Booz Allen and Hamilton Inc.  
 The Dietrich W. Botstiber Foundation  
 The Branson Family Foundation  
 Mary A. Brauer  
 Estate of Michael M. Brennan  
 James and Adean A. Bridges  
 Bright Funds Foundation  
 Brown Family Endowment  
 Buddhist Global Relief  
 Jay and Carolyn Buffenmyer  
 Mary Catherine Bunting  
 Donald Burriss Trust  
 Susan Okie Bush  
 The Cable Company LLC  
 John Stephen Caflich and Elizabeth Caflich  
 The Cedars Foundation  
 Celo Foundation  
 Natalia Chefer  
 The Chicago Community Foundation  
 The Chicago Community Trust  
 Citi  
 John R. Cleveland  
 Cogán Family Foundation  
 H. Rodgin Cohen  
 Estate of Ruth G. Collins  
 Comcast Corporation  
 Dick Crawford  
 Christy Cressey Foundation  
 Glen A. and Lynne Cunningham  
 CytoSorbents  
 Jacob W. Dale and Jason Liptak  
 Mr. Karl Dasher and Mrs. Erin Dasher  
 Debicki Foundation  
 Orville Dietel Trust  
 Shirley A. and Terry Dobson  
 DoorDash  
 John D. Dreisbach  
 DTE Energy Foundation  
 Estate of Alfred L. Dykstra  
 The Walter and Ursula Eberspacher Foundation  
 Eleanor Edmondson  
 Bart D. Ehrman  
 Doug and Florida S. Ellis  
 Ray Ellis  
 The Ellis Foundation  
 Scott C. and Elizabeth P. Evans  
 Bert E. and Candace M. Forbes  
 Estate of Shirley J. Foster  
 Lloyd A. Fry Foundation  
 Estate of John P. de Gara  
 Rosemarie E. Gatehouse Trust  
 Deirdre M. Giblin and David B. DuBard  
 The Wilbur and Hilda Glenn Family Foundation  
 Global Impact  
 Leonard C. Goodman  
 The Donald G. Goodwin Family Foundation Inc.  
 Jill R. Gordon  
 Robert D. and Linda Graham  
 The Gray Jacklin Charitable Trust  
 Jeffrey Greve and Janis Kahn  
 Ms. Amy S. Guth and Timothy F. Guth  
 Peggy Hamburg and Peter Brown  
 Douglas W. and Tsognie Hamilton  
 Everett Harper  
 Harris Philanthropies  
 Dale and Louise Henderson  
 John T. and Felicia K. Hendrix  
 Carl Hess and Tracy Pirnack  
 Larry and Terry Hill  
 Hoag Family Charitable Foundation  
 Stephen Hoffmeister  
 Robert Horowitz

Julia Huiskamp  
 David L. and Sara E. Hunt  
 Alan and Glen G. Husak  
 The Imlay Foundation Inc.  
 IMVU  
 E. Neville and Pamela A. Isdell  
 Paul J. and Deborah K. Jansen  
 Alan K. and Cledith M. Jennings Foundation  
 Radhika Jones  
 Eric Jorgensen  
 Joshua Klayman  
 Robert Koch  
 Cynthia Kriebel  
 Ronni S. Lacroute  
 Charles Lamar Family Foundation  
 The Family of George M. and Mary Jane Leader  
 Loreal LeGate  
 The Leibowitz and Greenway Family Charitable Foundation  
 Lamar Leland  
 Jared Levy and Alba Alamillo  
 The Lichtenberger Foundation  
 Lookout  
 Lubert Family Foundation  
 Lurie and Vogelsong Charitable Fund at the Community Foundation of Northern Nevada  
 Ruth MacCartney Charitable Trust  
 Frank and Susan Mars  
 Estate of Paul S. Marsh  
 June Mathis  
 Kathleen McCarthy/KLM Foundation  
 McCormick & Company Inc.  
 The Bhupat & Jyoti Mehta Family Foundation  
 H. Conrad III and Sarah S. Meyer  
 Mimecast  
 Joseph H. and Cynthia G. Mitchell  
 Morgan Stanley  
 Multiple District 19 Lions  
 Herbert V. Nootbaar Fund  
 Nordstrom  
 The Colleen & Sam Nunn Family Foundation  
 Christopher O'Leary  
 Obediah Fund of the Coastal Community Foundation of South Carolina  
 Open Society Institute  
 Paradise on Earth Fund  
 PayPal

Jim Pentecost  
 Estate and Trust of Angelina P. Perdomo  
 Kathleen Peto and Daniel Rice  
 Mr. David Peyton  
 Leslie and William Pretsch  
 Connie and John Rakoske  
 Raytheon Company  
 Martha L. Rees  
 Estate of Frederick Reif  
 Marsha Slater Rider, Ph.D.  
 \*David Rose  
 George J. Rosenkranc Charitable Trust  
 The Dorothea Haus Ross Foundation  
 Rotary Club of Atlanta  
 David Rouleau  
 Michael Sachse and Erin Segal  
 Salesforce  
 Dr. Scholl Foundation  
 Jean Sharbel Living Trust  
 Henry and Christina Shea  
 Estate of Leo Shryock  
 Estate of Jeffrey Skeer  
 Southface Energy Institute  
 The Spurlino Foundation  
 Christine and Mark St. Clare  
 Mr. Hayes Stover and Mrs. Patricia Stover  
 Norma Jean Sulzberger Trust  
 Summit Charitable Foundation  
 Sunbites  
 The Ping Y. Tai Foundation Inc.  
 Textron Inc.  
 Estate of Richard W. Thomas  
 Trimble  
 Tsadik Foundation  
 Clyde Tuggle and Mary Streett  
 Tull Charitable Foundation Inc.  
 William D. Unger  
 United Launch Alliance  
 United Nations Office for Project Services  
 Kathleen Van Boven  
 The VF Foundation  
 VMware  
 Deidra J. Wager  
 Waldemar H. Wenner  
 Marc K. Whitehead and Sheila M. O'Brien  
 Mardys Whiteman Trust  
 Estate of Joyce Karyl Winn  
 The Ann S. Wolff Living Trust



BANGLADESH

Sara and Robert Wright  
Dr. and Mrs. Yates  
The Zeist Foundation

**Founder's Council Arthur  
Ringland Society**

**FY21: \$10,000-\$24,999**

3i Partners  
Iman Abdulmajid  
Joseph Abraham  
Active Media Services Inc.  
Kenneth L. Adams  
AIKON  
Michiko Aizawa  
M. Sohail Akbar  
Runa Alam  
Marc Allen  
George and Herawati Alvarez-Correa  
Estate Frank Amato  
American Endowment Foundation  
Michelle and Bob Atchinson  
Craig G. Anderson  
John Archibald Anderson CRUT  
Eugenius and Agnes Ang  
Anonymous Auth0 (25)  
Aviv Foundation  
ba&sh  
Thomas and Marcia Baertlein  
Bainum Family Foundation  
Margaret D. and Matthew T. Balitsaris  
Cecile Falk Balsler  
Oneil Banks  
Matthew J. Bannick Family Fund  
Judy Barto  
Elizabeth J. Batarse  
Julia H. and Michael A. Becke  
Michael G. and Diane Beemer  
Darius Behnam Trust  
William Behrens  
Gerald W. Bernstein  
Lyle G. and Susan A. Best  
William Biggs  
Donald and Sheila M. Billings  
Oliver and Jenny Blackman  
Edmund H. Blakeman Trust  
Marcia W. Blenko and Don B. Blenko Jr.  
John W. Bloom  
Karl and MaryAnn Boehmke  
Darlene Bookoff  
Alastair and Jeanine Borthwick  
Vito Braccino

John and Margaret Brennan Charitable  
Trust  
The Briar Foundation  
Johanna Brookner  
Charles W. Bruno  
Jim Bullock and Ralph Elder  
Molly Burke  
The Burkehaven Family Foundation  
Robert W. and Patti B. Burns  
Patrick Butler  
Charles C. Cahn Jr.  
Martha Campbell  
Lauretta Cappiello Living Trust  
Walter C. D. Carlson and Debora De  
Hoyos  
Estate of Elisabeth W. Case  
Jessica Case  
Mary Warren Case and Stanley E. Case  
Gerhard and Regina Casper  
Cepheid  
Mike and Julie Chang  
Sylvia Chin  
Sailesh Chittipeddi  
Heinke K. Clark  
The Cleveland Family Foundation  
Frank P. Cofone  
Jennifer Cole  
Titilope Cole  
Ruth M. Collins  
John and Stephanie Connaughton  
William J. Cook Trust  
Adriana Corinaldesi  
Cornerstone Research  
Cowen and Company LLC  
Joshua Criscoe  
Susan M. Crown  
Stephen Cumbie  
Gerald R. and Jeanne Curtis  
Thomas J. Cutillo and Priscilla A.  
Myrick  
Canute Dalmasse  
Richard T. and Sally S. Dawson  
Consuelo and Saul Diaz  
Mark Dickinson and Letizia  
Stanghellini  
Bob and Terri DiMeo  
Discovery Communications Inc.  
Kenneth Douglass Foundation  
Michael and Regina Dowd  
Ann P. Dursch  
Robert J. and Kimberly W. Eck  
John Eckfeldt and Nancy Shultz



Ecolab  
The Eirenikos Foundation  
Thomas Eldridge and Jennifer Maron  
Connie Ellerbach  
Joseph H. and Barbara I. Ellis  
Todd and Dorothy Evans  
Herbert and Jeanette Evert  
Patricia Weiss Fagen  
James W. and Tammy G. Felt  
Leon Ferder  
David L. Ferrera and Vinita Chopra  
Ferrera  
Tracy Ferron  
FIS Foundation Inc.  
Edward R. Fisher Charitable  
Foundation  
Sarah Fisher  
Warren and Deb Fisher Fund  
Jody F. Fleischer  
Lewis Fountain  
Russell J. Frackman and Myrna D.  
Morganstern  
Estate of Robert B. Francini  
Robert Fraser  
Annie Bennett Glenn Fund  
The J.B. Fuqua Foundation  
Margaret W. Furey  
Geller & Company  
General Electric  
Sander Gerber  
Nancy E. Gibbs, M.D.  
Edward K. Giles  
Mary Ginn  
Penelope Goodfriend  
Geoffrey A. Goodman  
Google  
Martin and Kerrilee Gore  
Jim and Carol Green  
Steven M. Greenberg and Avra  
Goldman  
Estate of Mary E. Greene  
James E. Grindlinger Trust  
Grosvenor Building Services  
Winston and Helen Guest  
Elizabeth Gunn  
Vineet Gupta and Mudita Jain  
The Marc Haas Foundation  
Linda and Frederick Haddad  
Charlotte and Floyd Hale  
Paul R. and Lisa Haller  
Douglas and Mary Hallward-Driemeier  
Karen Halvorsen

Mary M. Hasten and Brien O'Brien  
Mark Heising and Elizabeth Simons  
Julie\* and Bayard Henry  
Wes Heppler  
Ellen Hertzmark  
Estate of Laura E. Higginbotham  
Paul Higgins  
Hilton  
Deborah M. Hinton and J.R. Rowlett  
Daniel Hitchcock  
Hobson/Lucas Family Foundation  
Honeywell International  
Sandra Horbach and Steve Skoler  
Winnifred Howard Trust  
Lincoln Howell  
Carl C. and Marilyn Hug  
Tom and Julie Hughes  
Joseph V. Huntington  
Richard Hurley  
Ana and Tanvir Hyder  
Henna Inam  
William and Elaine Jermann  
Richard J. and Involut V. Jessup  
Julia G. Johns  
Tom and Edwina Johnson Family  
Foundation  
Estate of Carolyn Ann Jones  
Judith Kadish Trust  
Michael G. Kaehr  
The Ina Kay Foundation  
Michael and Carol Kearney  
Kevin J. and Pamela M. Kelly  
Michael A. and Dona M. Kemp  
Maria Kenny  
Richard and Gloria Kerns  
Frederick Kerrest and Sara L. Johnson  
Kindergarten Unit Foundation  
Annie Lamont  
Estate of Carl E. Langenhop  
Maria Lasagabaster  
Pauline P. Lee  
Kenneth A. and Lucy G. Lehman  
Leidos  
James G. and Carol A. Lertola  
Les Oiseaux Foundation  
Janet Lewis  
Gregory J. Lincoln  
The Litterman Family Foundation  
Edward and Claire London  
LSP Family Foundation  
Raja Malkani

Joseph and Laurel Mancino  
Joseph R. and Linda K. Manthey  
Maurice Marciano Family Foundation  
Estate of F. Heywood Marsh  
Michael L. and Lydia M. Marshall  
Paul J. Marvin  
Louis S. Mastriani  
Robin and Peter Matt  
Brian K. and Anne S. Mazar  
Kevin G. McAnaney and Catherine R.  
McCabe  
Pamela B. McCabe  
John McFadden and Lisa Kabnick  
Martin McGlynn  
Ray C. McKinley Family Foundation  
Ralph E. McLain Trust  
Gregory S. and Lori A. McMillan  
Medallia  
Mandira Mehra  
Christopher D. Miller and Catherine  
McNamee  
Glen S. and Alison Milliman  
Lizanne and Robert Milton  
Edward and Ginger Mitchell  
The MITRE Company  
Hala Mnyamneh  
Mukund and Shanta Modak  
John Moore  
James Starr Moore Memorial  
Foundation  
Merle and Ellen Morgan Gift Fund  
Tyler Morrey  
Kristina and Patrick Morton  
Sandra Moss  
Mouat Charitable Trust  
The Muir House Foundation  
Adm. Mike Mullen  
Chris L. Nelson  
Frederick Nelson  
Luellen J. and Ronald G. Newmann  
Arthur C. Nielsen Jr. Family Charitable  
Trust  
Togo and Eleanor Nishiura  
The Esmond Nissim Foundation  
The William and May D. Norris  
Foundation  
Paul and Barbara Nowak  
Maureen O'Hara and David Easley  
Estate of Catherine E. O'Leary  
Matthew P. and Ellen O'Loughlin  
Estate of Robert D. O'Rourke  
Paul Oakland

Estate of Ronald J. Ocken  
Okta  
Dr. Gregory Olsen  
Douglas and Marcia Olson  
Optimum Compounding  
Amy and Paul Osenar  
Jonathan and Robin A. Painter  
Paramount Studios  
Naman Parekh  
Estate of Loretta A. Park  
Estate of Juliet Patterson  
Alan Pedersen and Lesley Pedersen  
Peine Family Fund  
Louis Perwien  
Dede Pickering  
Judy Pigott  
Pinterest  
Christopher and Tara Poseley  
Nancy Powell  
Estate of Howard F. Prass  
Kevin Pratt and Pamela Lane Pratt  
Estate of Ingeborg T. Price  
Pritzker Pucker Family Foundation  
R.K. Squire Company  
Arvind Rajan and Kelle Young  
Dinkar Rao  
Trust of Maurice G. Raymond  
Robert S. Reese  
The Jennine Regas Trust  
Wendell S. and Mary L. Reilly  
Barbara and Jack Reis  
Theodora Retsina  
Gordon and Jean Riel  
Sarah F. Roach  
Jim Rochelle  
Mrs. Rogers  
Mr. Bruce Rosenblum and Ms. Lori  
Laitman  
Ray and Meredith Rothrock  
Paul and Joan Rubschlager Foundation  
Rue La La  
Lisa Ruskowski and William McGlone  
John W. Ryan and Jenny P. Scheu  
English G. Sall  
Carrie P. Sample  
SAP  
Dan M. and Pam Sargent  
Susan M. Schaffer and Joan Hinckley  
The Schimmel Family Foundation

The Helen and Aaron Schlaffer Foundation Trust  
 Glenn Schmitt  
 Charles Schwab Foundation  
 Gregg S. and Kim J. Sciabica  
 Richard and Carol Seltzer  
 Sudhir and Jyotsna Shah  
 Fay H. and Ann Sherman  
 The Shymanski Trust  
 Sikand Foundation Inc.  
 Doug and Fabienne Silverman  
 Steve and Eileen Simmons  
 Skyscape Foundation  
 Don S. and Jane B. Slack  
 Leonard John Slaman Trust  
 Ronal W. and Nancy L. Smith  
 Carolyn Smith and Neil Soiffer  
 Timothy D. Smith and Karen E. Miller  
 Jonathan Solovy and Stacey Fisher  
 Martin J. Spalding  
 Malcolm K. and Penelope J. Sparrow  
 The Honorable Richard V. Spencer  
 Krishnakumar and Rama Srinivasan  
 Brien M. and Cynthia S. Stafford  
 Lois and Arthur Stainman  
 Campbell Steward  
 Martin Sticht  
 Harold and Lambertha Stier  
 Diana L. Strassmann and Jeffrey Smisek  
 Martha and William Stueck  
 Sub Pop Records  
 Estate of Dorothy J. Swanson  
 Tim Tassopoulos  
 Mr. and Mrs. Taylor  
 Lisa Thomas  
 Elizabeth S. Thompson  
 John A. Thompson Jr.  
 Michael Thompson  
 The Trio Foundation of St. Louis  
 Truist  
 Jane Vadnal IRA Beneficiary  
 Lisa and Jim Valone  
 Lance Van Dam  
 Estate of Anna R. Vilkaitis  
 The Rafael & Diana Vinoly Foundation  
 Virtu Financial  
 Paul and Susan Vogel  
 W. P. Carey Inc.  
 Christine Wächter-Campbell  
 William and Cathy Waters

The Watson Foundation Inc.  
 Estate of Max H. Weaver  
 Doug and Tara Weckstein  
 Lincoln Weed  
 Rosalie J. Coe Weir Foundation  
 Jack Weisberg Charitable Foundation  
 Estate/Trust of Shirley J. Weiss  
 Joachim F. and Rose D. Wernicke  
 Alison M. West  
 David J. Whippo  
 James D. Whitehead  
 James Whitlock  
 Michael and Geraldine Wiles  
 Wendy Dorthea Williams  
 Michele Williams-Abbott and John Abbott  
 Barbara and Edward Wilson  
 Fred and Sue Wintermantel  
 Ron and Kathy Wittig  
 The Carvel and Margaret Wolfe Charitable Fund  
 Women's Refugee Commission Inc.  
 World Bank Group  
 Vivian Wu  
 Daniel Yates and Tobie Whitman  
 Michael and Diane Ziering

**Circle 75**

*Donors who have made a special \$75,000 gift to CARE in support of the Crisis Response Campaign*

James and Adele Abrahamson  
 H.E. Sheikh Meshal bin Hamad Al Thani  
 Anonymous (4)  
 Paul and Mary Jan Bancroft  
 Cori Bargmann  
 Peter and Sarah Beshar  
 Mary A. Brauer  
 Martha and Toby Brooks  
 Molly Burke  
 Ted and Catherine Carlson  
 Heinke Clark  
 Dick Crawford  
 The Davee Foundation  
 Fabiola de Castro and Eduardo Castro-Wright  
 Doug Dunn and Donna Gaab  
 Ceree Eberly  
 Harold Simmons Foundation  
 Jack and Caroline Hardin  
 Scott Hawks

Karen and Mark Holzberg  
 Neville Isdell  
 Kristen Keirse and Bill Stanhope  
 Rosalind and Michael Keiser  
 Jake Dale and Jason Liptack  
 Bill and Lisa McGahan  
 Colleen and Senator Nunn  
 Christopher O'Leary  
 Paradise on Earth Fund  
 Martha Rees  
 Reilly Family Fund  
 Cammie and John Rice  
 Henry and Christina Shea  
 Jon and Kim Shirley  
 Timothy and Lisa Sloan  
 Lois and Arthur Stainman  
 Clyde Tuggle and Mary Streett  
 Deidra Wager  
 Joe and Rose Wernicke



# CARE leadership

## GLOBAL MANAGEMENT TEAM

### Stacy Aldinger

Chief of Staff and Strategy

### Claudine Mensah Awute

Vice President for International Programs and Operations

### John Aylward

Chief Marketing Officer

### Tatiana Bertolucci

Regional Director for Latin America and the Caribbean

### Rani De Silva

Chief Financial Officer

### Madhu Deshmukh

Vice President of Program Strategy and Impact

### Melissa Heggie

Chief People, Equity, and Inclusion Officer

### Eric D. Johnson

General Counsel

### Deepmala Mahla

Vice President of Humanitarian Affairs

### Dr. Muhammad Musa

Regional Director for Asia

### Michelle Nunn

President and CEO  
CARE USA

### Sarah Taylor Peace

Chief Revenue Officer

### Matthew Pickard

Acting Regional Director for East, Central, and Southern Africa

### Ritu Sharma

Vice President of U.S. Programs and Policy Advocacy

### Nirvana Shawky

Regional Director for Middle East and North Africa

### Balla Sidibe

Regional Director for West Africa

### Gloria D. Steele

Chief Operating Officer

### Lona Stoll

Vice President of Impact and Innovation  
Chief Innovation Officer

## BOARD OF DIRECTORS

### CHAIR

#### Glenn Hutchins

Chairman, North Island  
Co-Founder, Silverlake

### VICE CHAIRS

#### Susan Hassan

Founder  
Sea Dune Partners

#### Radhika Jones

Editor-in-Chief  
Vanity Fair

### TREASURER

#### Kathryn Petralia

President and Co-Founder  
Kabbage Inc.

### SECRETARY\*

#### Eric Johnson

General Counsel  
CARE USA

### MEMBERS

#### Runa Alam

Co-Founder and CEO  
Development Partners International

#### Dolika Banda

Former Director  
International Finance Corporation,  
World Bank Group and CDC Group  
Plc, UK

#### Martha Brooks

Former President and COO  
Novelis Inc.

#### Charlie Dent

Former Congressman and  
Policy Advisor

#### Michèle Flournoy

Co-Founder and Managing Partner  
WestExec Advisors

#### Jay Hallik

Managing Director  
Morgan Stanley

#### Everett Harper

CEO and Co-Founder  
Truss, The Infrastructuralists

#### Seema Jayachandran

Professor of Economics  
Northwestern University

#### Stephen P. Joyce

CEO and Director  
Dine Brands Global

#### Mohamed Kande

Vice Chairman and U.S. Advisory  
Leader/Global Advisory Leader  
PwC

#### Tessa Lyons-Laing

Director of Product  
Instagram

#### H. Conrad Meyer III

Private Investor

#### Valerie Montgomery Rice, M.D., FACOG

President and Dean  
Morehouse School of Medicine

#### William Mosakowski

CEO and Founder  
Public Consulting Group Inc.

#### Jane Mosbacher Morris

CEO and Founder  
To the Market

#### Michelle Nunn

President and CEO  
CARE USA

#### Christopher D. O'Leary

Former Executive Vice President  
General Mills Inc.

#### Una Osili

Associate Dean, Research and  
International Programs  
IUPI

#### Horacio Rozanski

President and CEO  
Booz Allen Hamilton Inc.

#### English Sall

Board Member  
Sall Family Foundation

#### Richard Stengel

Senior Advisor  
Snapchat

### Board Emeritus

#### Virginia Sall

Co-Founder  
Sall Family Foundation

TANZANIA



# 2021 financial overview



## Letter from the CFO

2021 marks the 75th anniversary of CARE, when the first CARE Package was delivered in May 1946 to war-torn Europe. Seventy-five years on, we continue to deliver on our commitment to support global humanitarian crises. As we embarked on another extraordinary year, we saw many countries across the world challenged by COVID-19 pandemic variants that continue to impact the livelihoods of women and girls. We adapted to the changing context and pivoted our global operations to reach more vulnerable communities across the world, enabling us to serve 100 million people in over 102 countries through 1,495 active projects.

Our success in 2021 resulted in CARE supporting 14 million people to advance gender equality; 85% of our projects integrated gender into their work. We helped 24.1 million people who were affected by humanitarian crises to meet their basic needs and provided access to food, water, and nutrition for 33.9 million.

CARE's total revenue grew by 19% to \$732 million in fiscal year 2021. Private revenue of \$191 million was up 62%

from FY20, with strong performance across all channels, particularly in Major Gifts and Corporate fundraising. Total program expenses, covered primarily by restricted funds, were \$45.7 million above the original budgets due to implementations of humanitarian programs in the Middle East and East and Southern Africa.

We are tremendously grateful for the generous support from our private donors, the U.S. government, and other institutions that helped CARE advance our mission.

**We count on your continued support and contribution in 2022, as we deliver quality services to save lives, defeat poverty, and achieve social justice.**

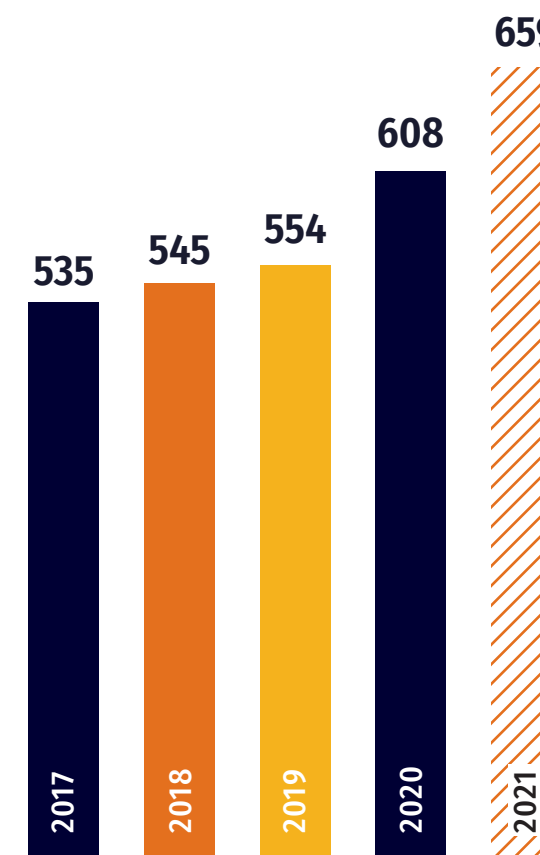
Thank you

Ranil De Silva  
**Chief Financial Officer**

WE ARE PROUD THAT WE WERE ABLE TO GROW PROGRAM EXPENSE OVER TIME, BY 23% FROM 2017 TO 2021.

## Program Expense Growth

(in millions)



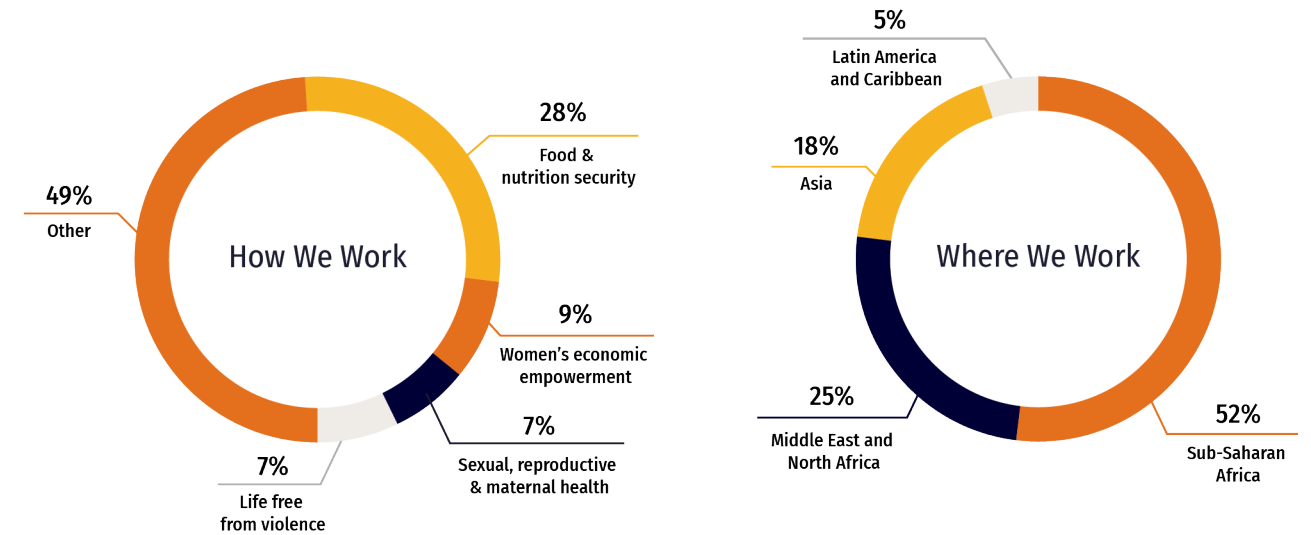
## CARE USA Consolidated Statement of Activities

For the Years Ended June 30, 2021 and 2020

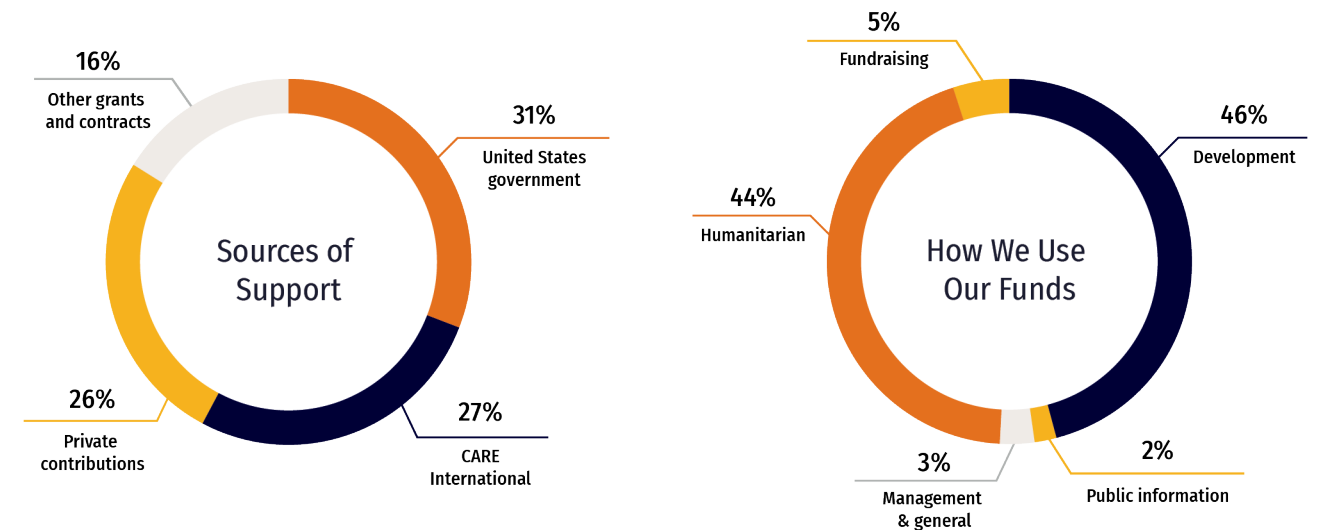
	Without Donor Restrictions	With Donor Restrictions	Total 2021	Total 2020
<b>Support</b>				
Contributions of financial assets				
Private contributions	\$ 72,768	\$ 106,892	\$ 179,660	\$ 104,994
United States government	204,096	-	204,096	172,299
CARE International	196,591	-	196,591	189,791
Other institutional donors	108,583	-	108,583	103,912
Contributions of nonfinancial assets				
Private contributions	-	11,994	11,994	13,379
United States government	20,354	-	20,354	25,678
CARE International	352	-	352	-
Other institutional donors	4,664	-	4,664	1,105
Other revenue	3,516	103	3,619	3,369
Satisfaction of restrictions	121,055	(121,055)	-	-
<b>Total support</b>	<b>731,979</b>	<b>(2,066)</b>	<b>729,913</b>	<b>614,527</b>
<b>Expenses</b>				
Program activities	658,572	-	658,572	608,130
Supporting activities	56,703	-	56,703	51,210
<b>Total expenses</b>	<b>715,275</b>	<b>-</b>	<b>715,275</b>	<b>659,340</b>
<b>Investment income and other gains and losses</b>	<b>8,881</b>	<b>28,993</b>	<b>37,874</b>	<b>711</b>
Total changes in net assets	<b>25,585</b>	<b>26,927</b>	<b>52,512</b>	<b>(44,102)</b>
Net assets, beginning of year	66,722	265,174	331,896	375,998
<b>Net assets, end of year</b>	<b>\$ 92,307</b>	<b>\$ 292,101</b>	<b>\$ 384,408</b>	<b>\$ 331,896</b>

## Financials at a Glance

### Program Work Overview



### Selected Financial Information





## VISION

We seek a world of hope, inclusion, and social justice, where poverty has been overcome and all people live with dignity and security.

## MISSION

CARE works around the globe to save lives, defeat poverty, and achieve social justice.

## FOCUS

We put women and girls in the center because we know that we cannot overcome poverty until all people have equal rights and opportunities.

## VALUES

- TRANSFORMATION
- INTEGRITY
- DIVERSITY
- EXCELLENCE
- EQUALITY





THIS YEAR, JOIN US AS WE FACE GLOBAL CHALLENGES AND STAND ALONGSIDE OUR COMMUNITIES.

### DONATE

Your gift today can help change the world of tomorrow.

Visit: [care.org](http://care.org)  
Email: [info@care.org](mailto:info@care.org)  
Call: 1-800-521-CARE (2273)  
Mail: CARE Gift Center  
P.O. Box 1870  
Merrifield, VA  
22116

**Future Gifts**  
Help CARE fight poverty through a bequest. Contact Planned Giving at **1-800-752-6004** for information about including CARE in your estate planning.

### ACTIVATE

Join the conversation. Mobilize your networks to create a community of CARE.

- @careorg
- @care
- carefans
- CARE

### ADVOCATE

Speak up! Join CARE Action and raise your voice in the fight against extreme poverty. Call, meet, inform your elected leaders. [careaction.org](http://careaction.org)



**JOIN US!** [care.org/careers](http://care.org/careers) [care.org/get-involved](http://care.org/get-involved)



## HEADQUARTERS & SOUTHEAST FIELD OFFICE

### CARE USA

151 Ellis Street NE  
Atlanta, GA 30303  
T: 404-681-2552

### CONSTITUENT SERVICES

1-800-422-7385  
info@care.org

### FIELD OFFICES

#### Boston

P.O. Box 390292  
Cambridge, MA 02139

#### Chicago

P.O. Box 57569  
Chicago, IL 60657

#### Los Angeles

3108 Glendale Boulevard, #534  
Los Angeles, CA 90039

#### New York

370 Lexington Avenue  
New York, NY 10006

#### San Francisco

465 California Street, Suite 475  
San Francisco, CA 94104

#### Washington, D.C.

1100 17th Street NW, Suite 900  
Washington, D.C. 20036

**Please send donations to  
CARE's gift processing center  
rather than field offices:**

CARE Gift Center  
P.O. Box 1870  
Merrifield, VA 22116



PHOTO CREDITS — Cover: Asafuzzaman Captain/CARE; Inside Front Cover: Karin Schermbrucker/CARE; Page 7: James Rodriguez/Makemende for CARE; Page 8: Lameck Luhanga/GGimages/CARE; Page 12/13: Lameck Luhanga/GGimages/CARE; Page 14: Erika Piñeros/CARE; Page 16: David Mutua/CARE; Page 18: Valerie Fernandez/CARE; Page 21: Asafuzzaman Captain/CARE; Page 22: Johanna-Maria Fritz/Agency Ostkreuz; Page 25: Ala kheir/CARE; Page 27: Phil Kabuje/CARE; Page 28/29: Phil Kabuje/CARE; Page 32/33: Douglas Diave/CARE; Page 34/35: Nofy Nandrianina Noelisoa Rajernerson/CARE

CARE is an Equal Opportunity Employer and Affirmative Action Employer (AA/M/F/D/V) dedicated to workplace diversity. CARE® and CARE Package® are registered marks of CARE. Copyright ©2022 by Cooperative for Assistance and Relief Everywhere, Inc. (CARE). All rights reserved. Unless otherwise indicated, all photos ©CARE.